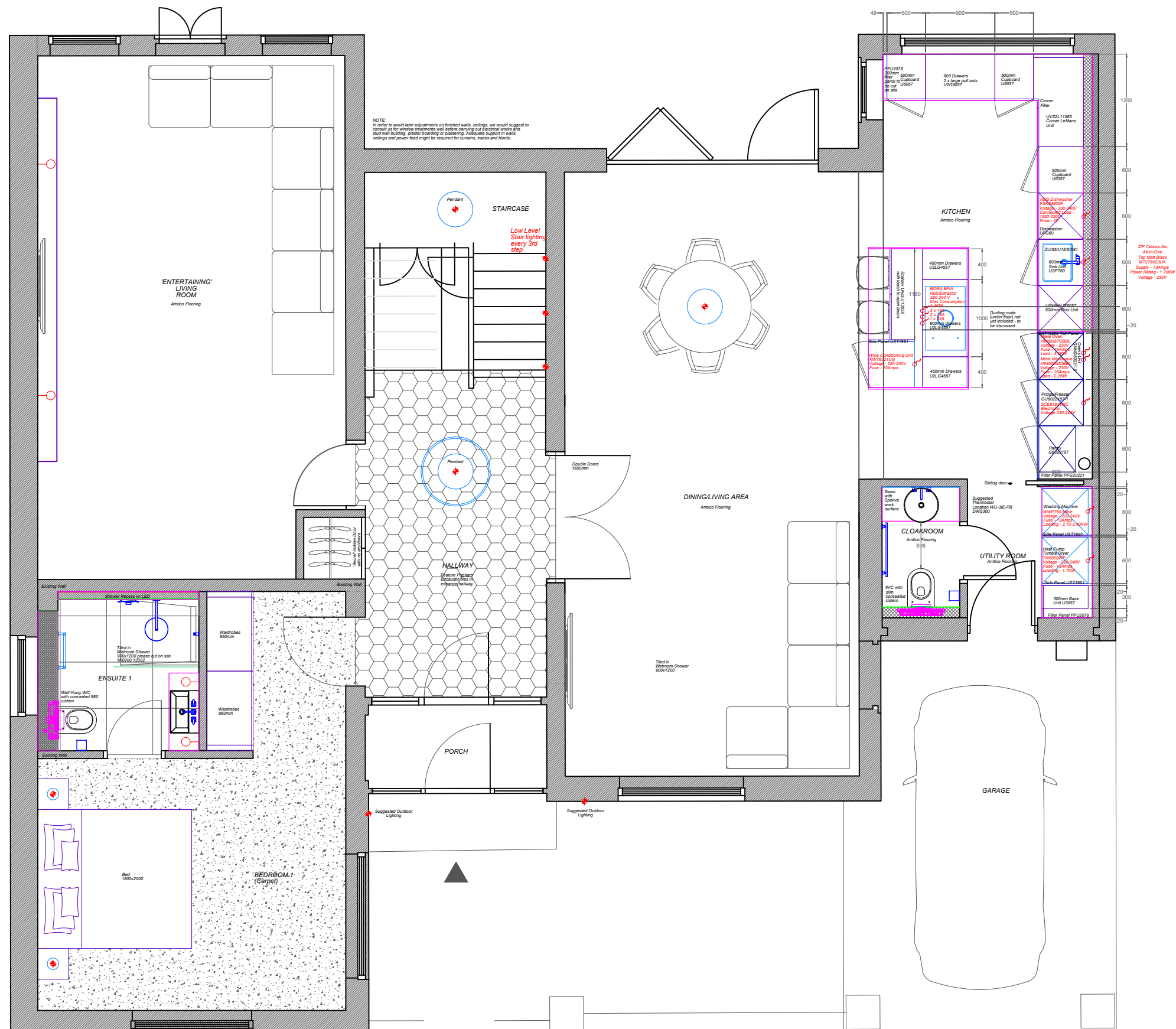
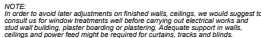




FULL HOUSE PROJECT

CLIENT: PROPERTY DEVELOPER





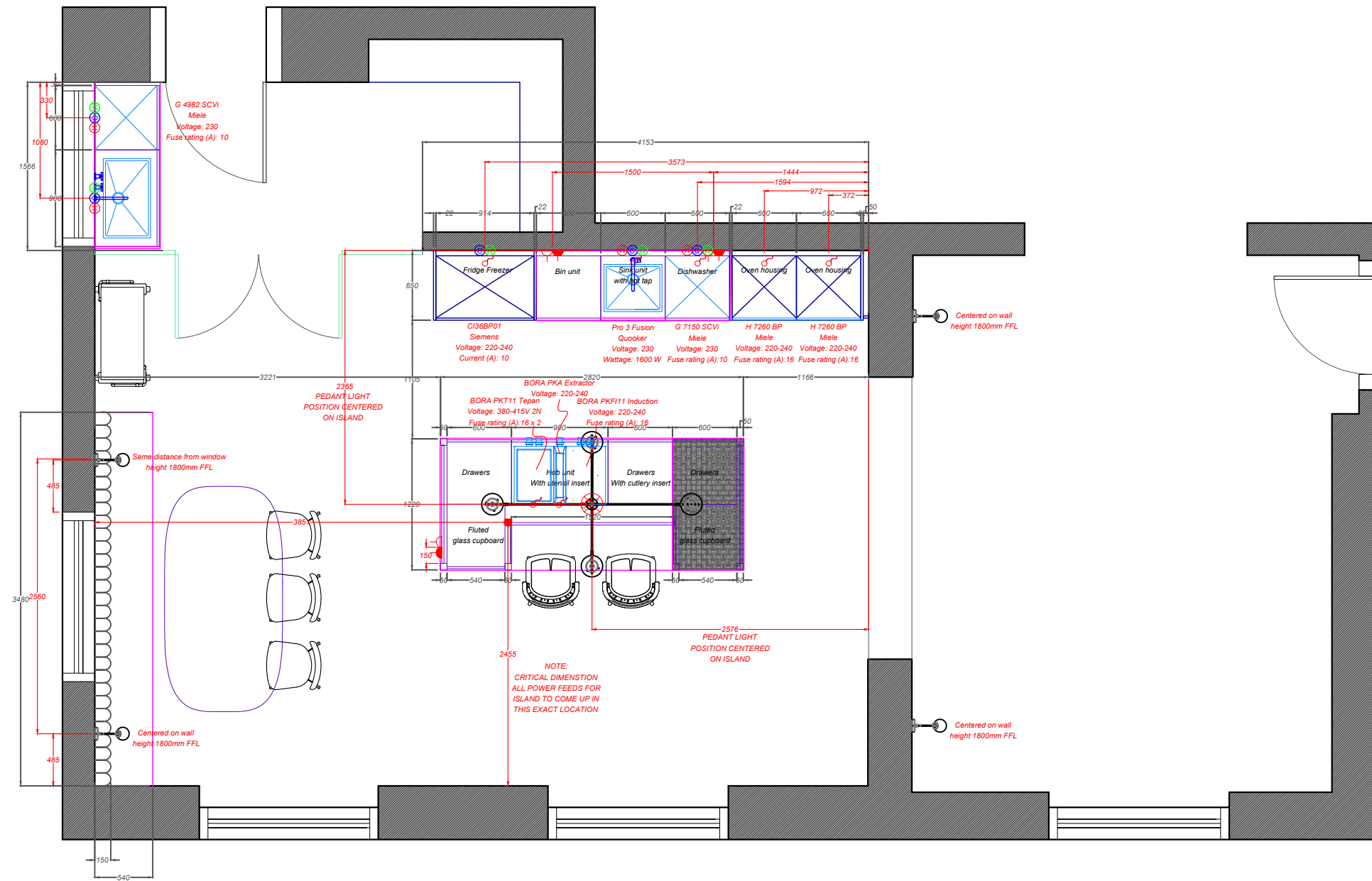


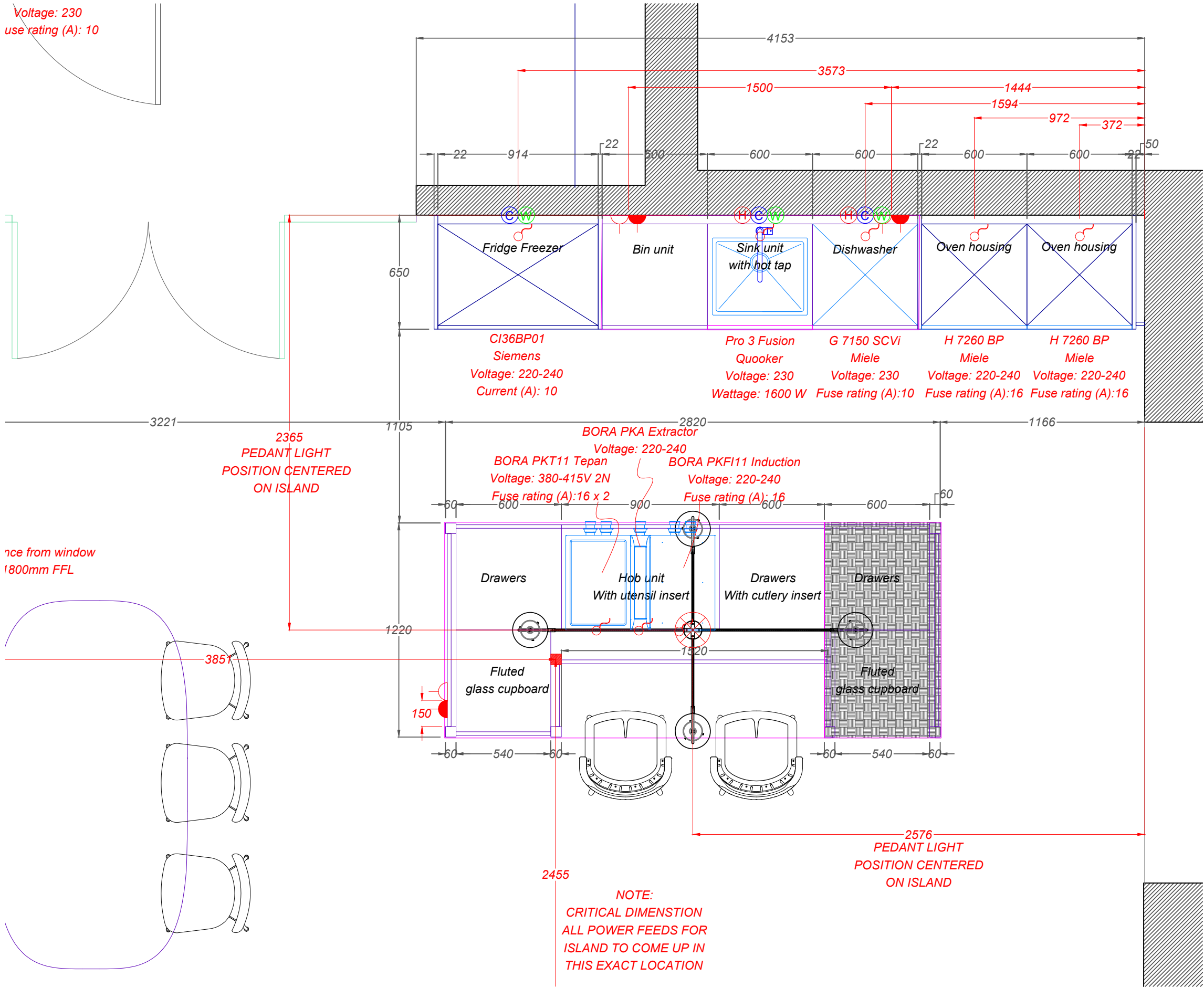




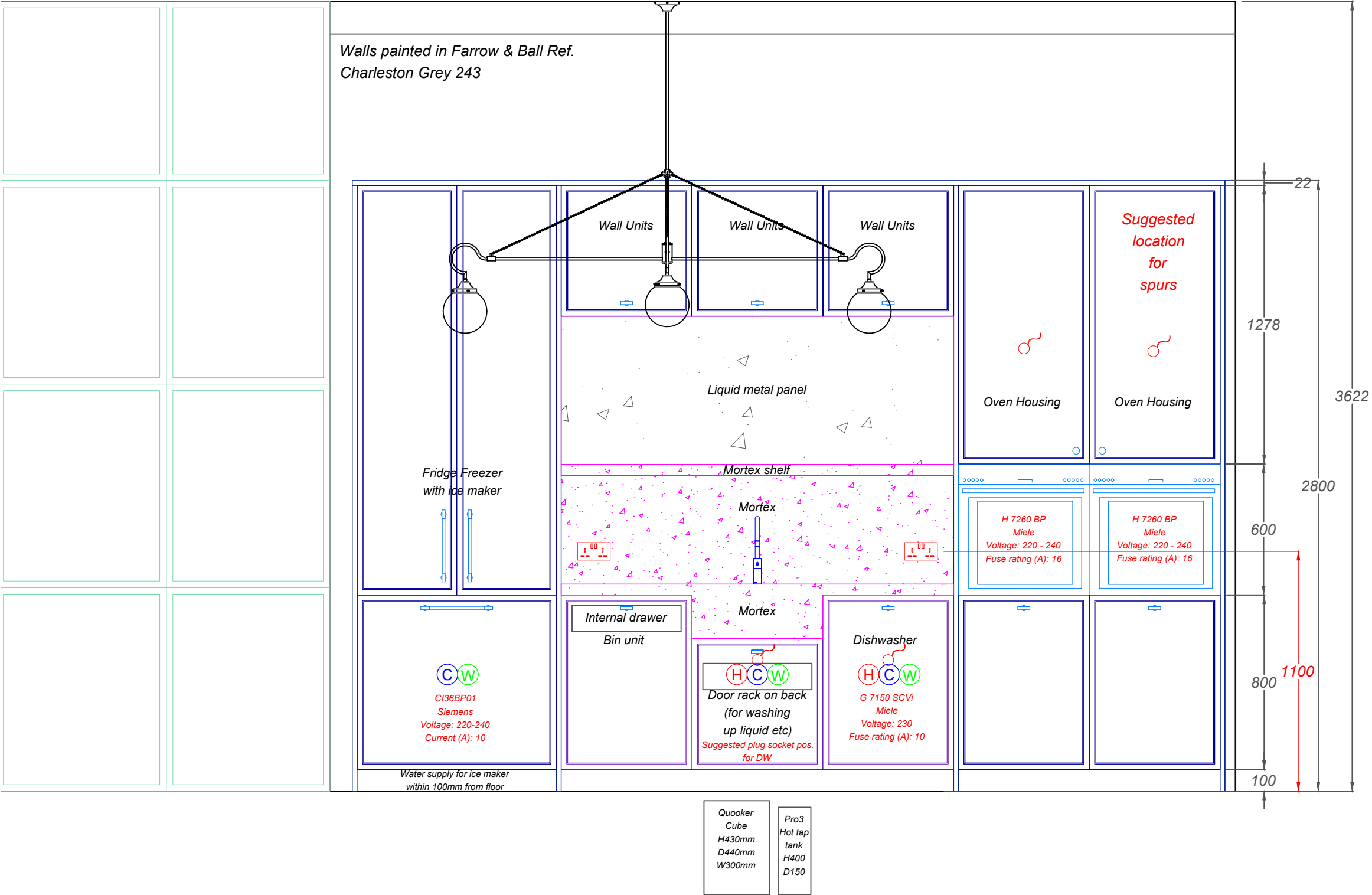
KITCHEN

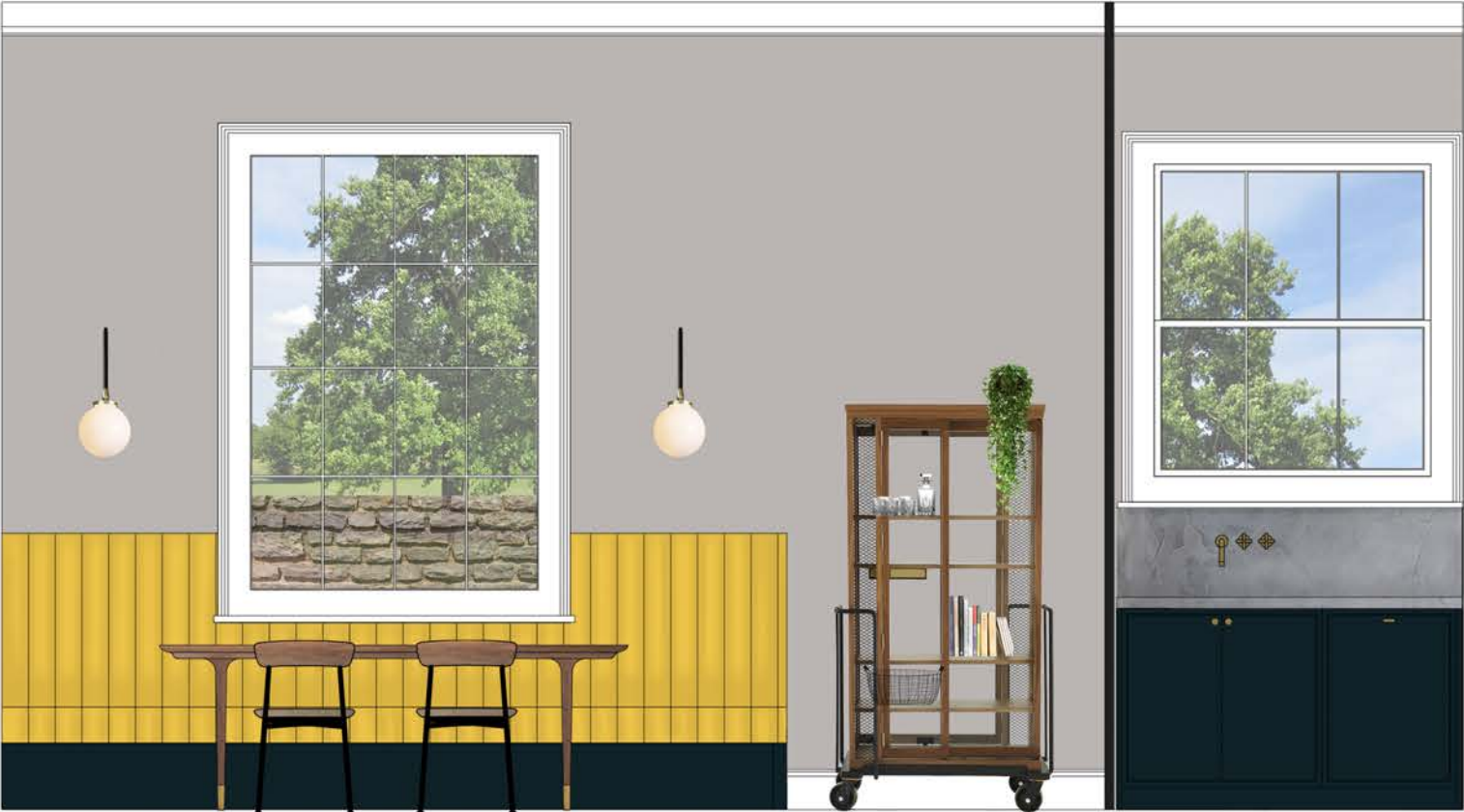
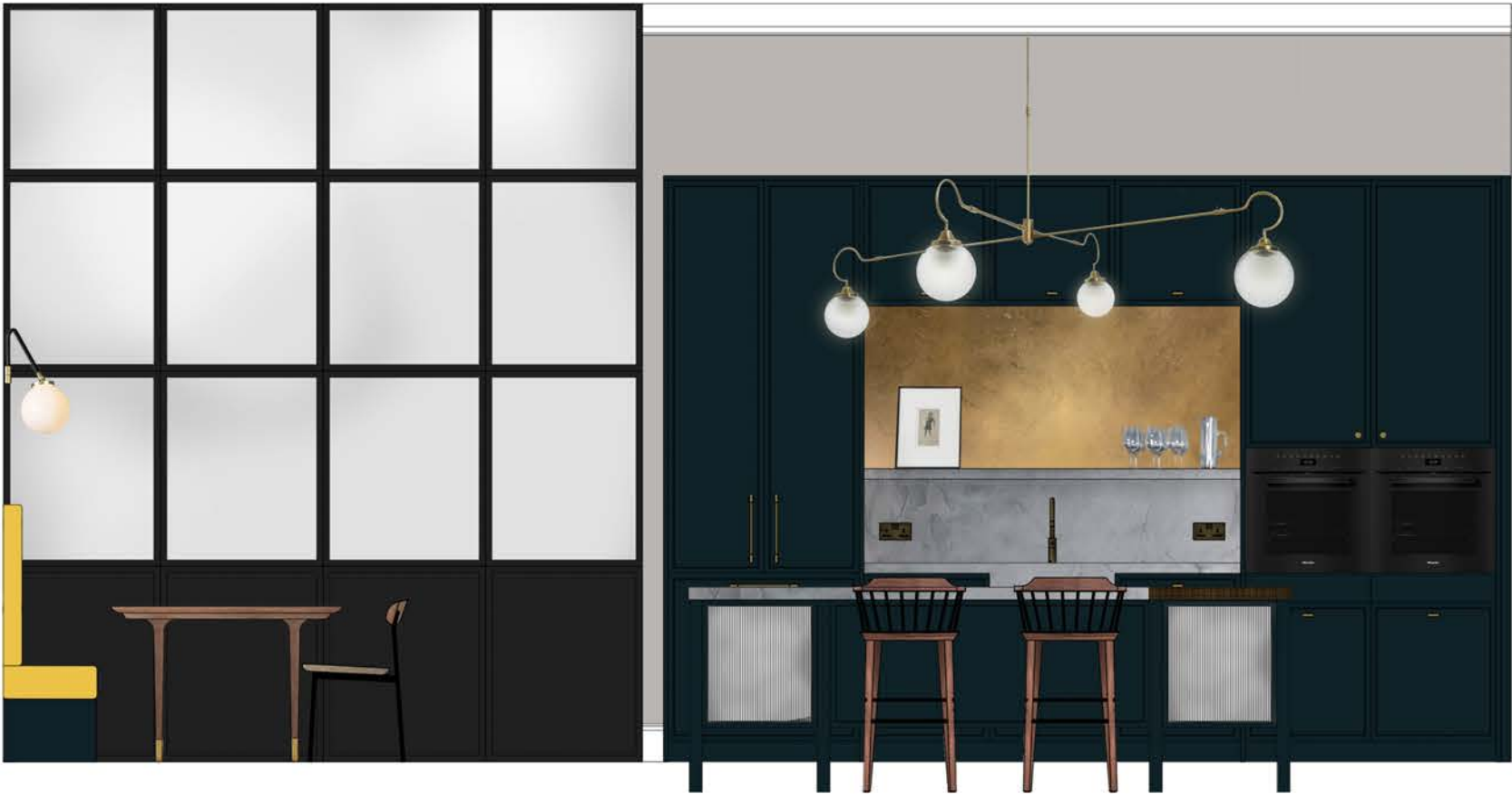
CLIENT: PRIVATE (KITCHEN/UTILITY/DINING)





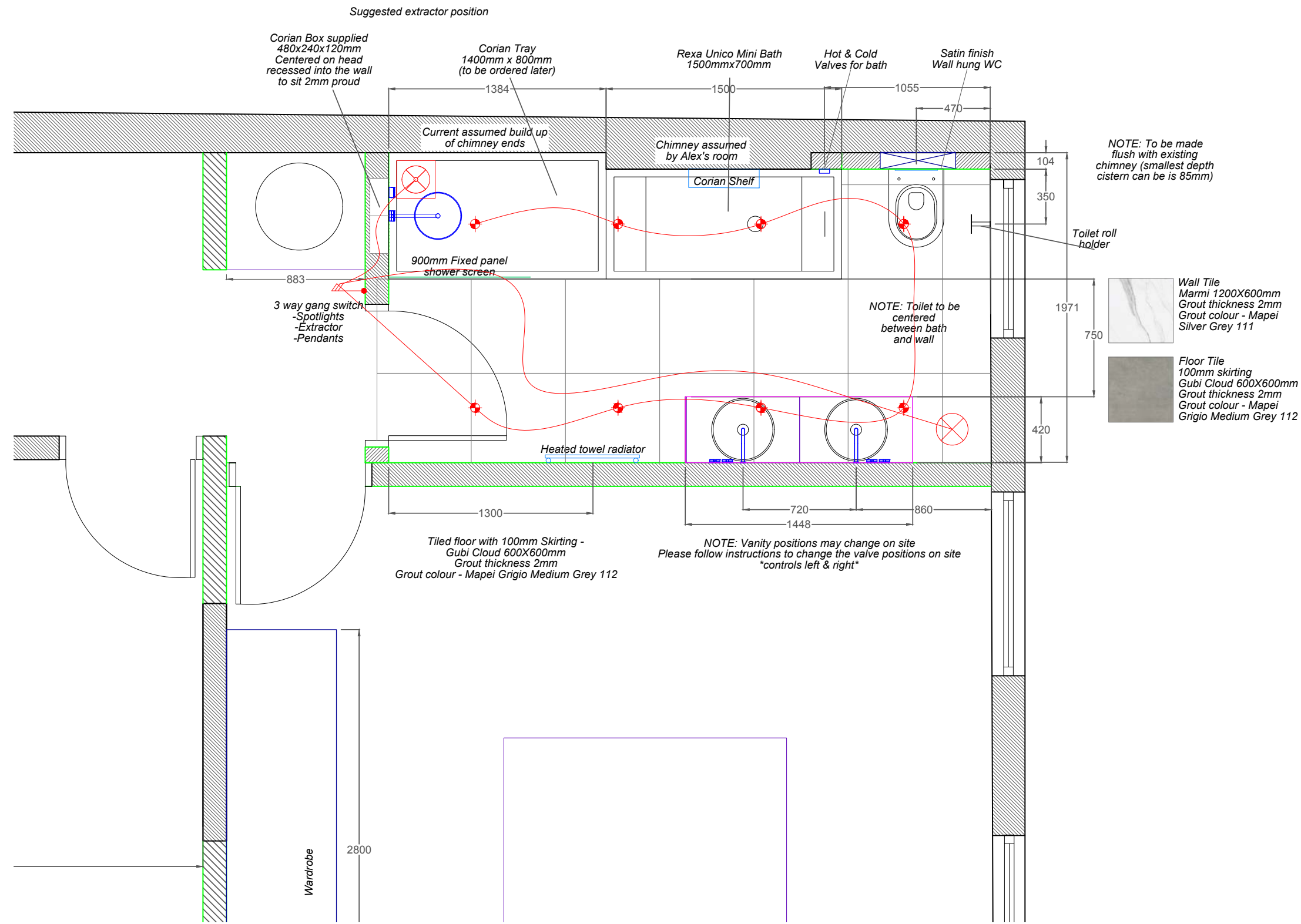
Ceiling/Window Architrave/Skirting/Cornicing in Matt
Eggshell Farrow & Ball Ref.
All White 2005

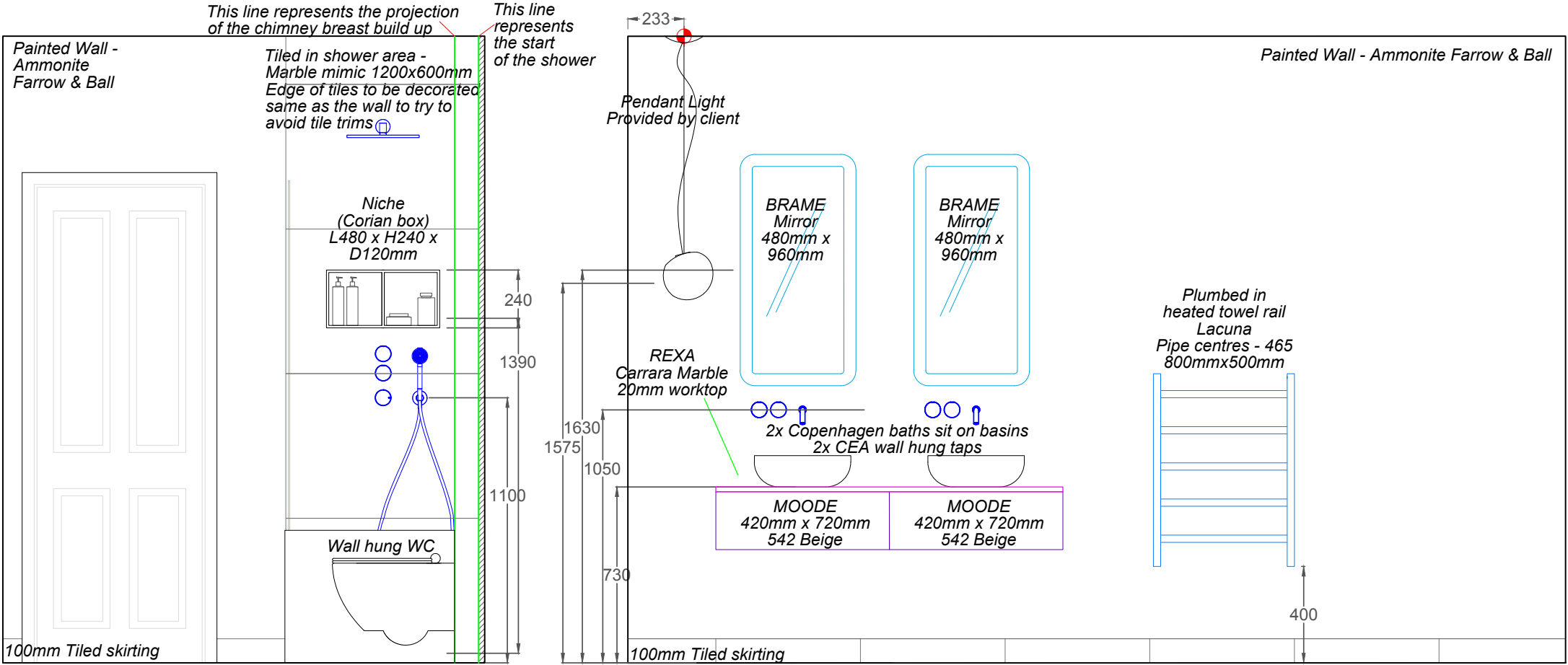
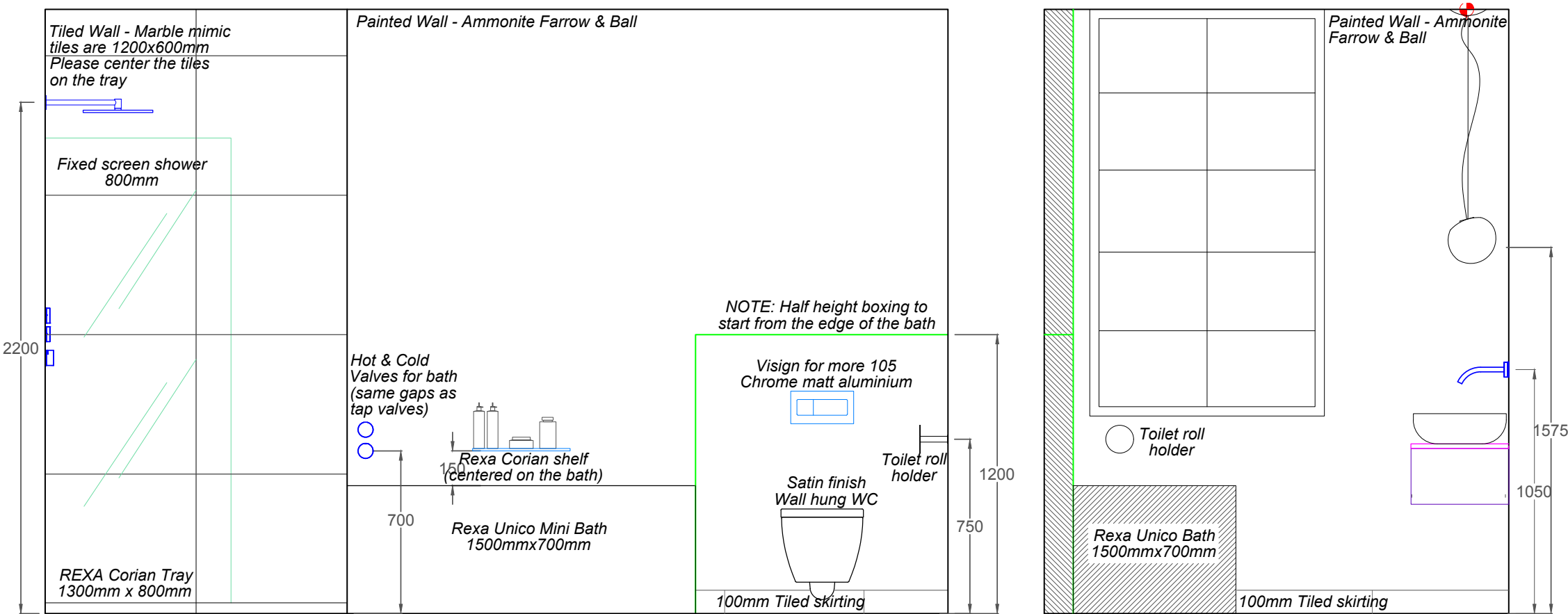




MASTER BATHROOM

CLIENT: PRIVATE (FULL HOUSE)

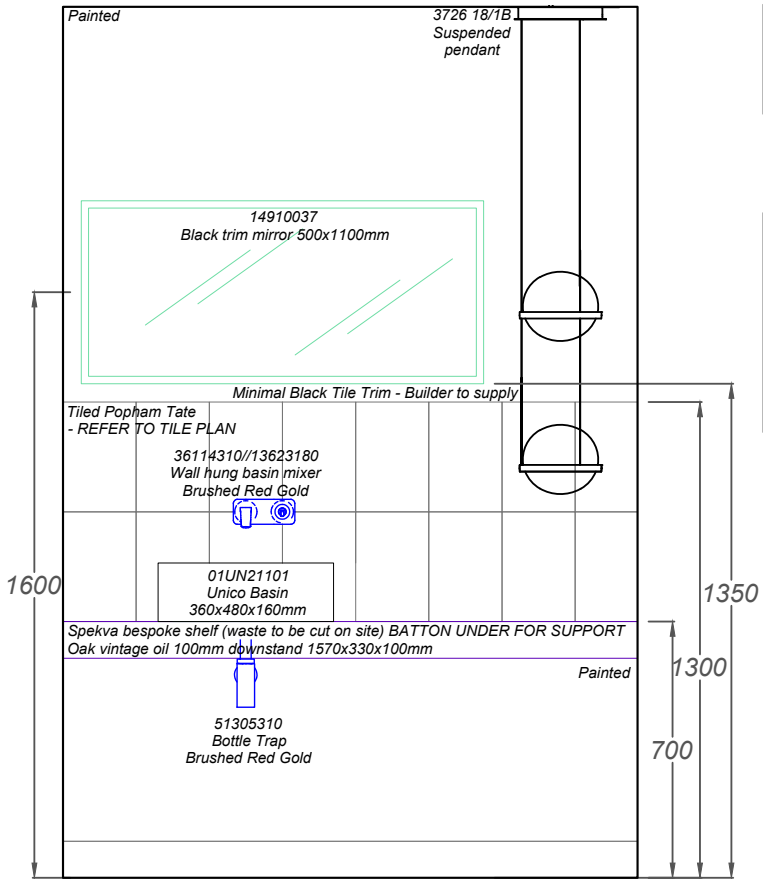
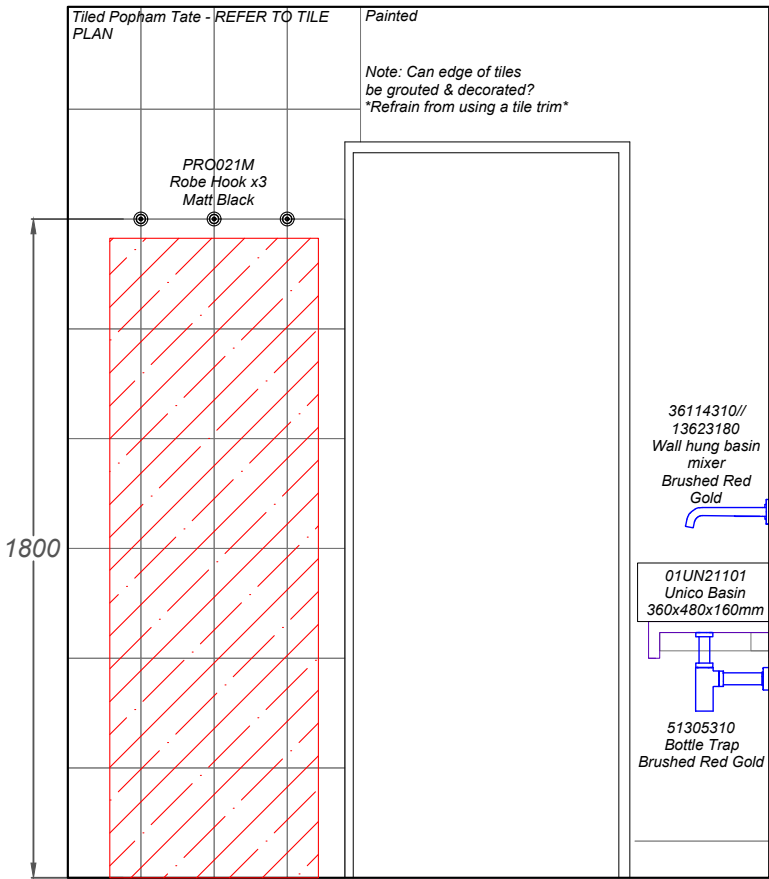






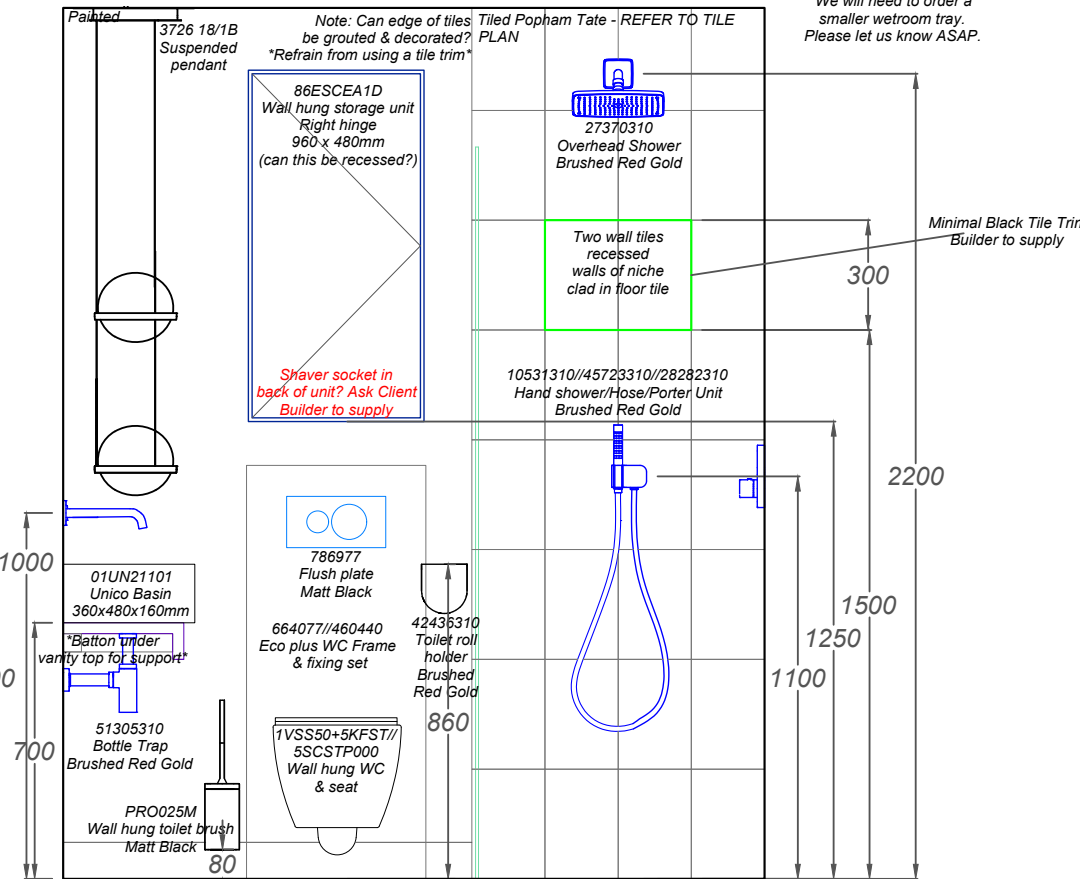
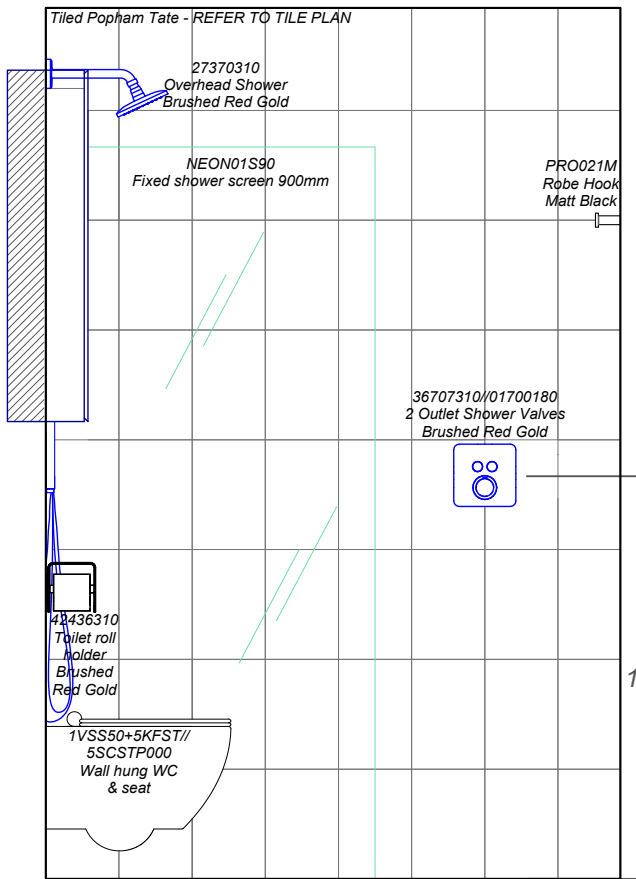
SANTORINI BATHROOM

CLIENT: PRIVATE (FULL APARTMENT)

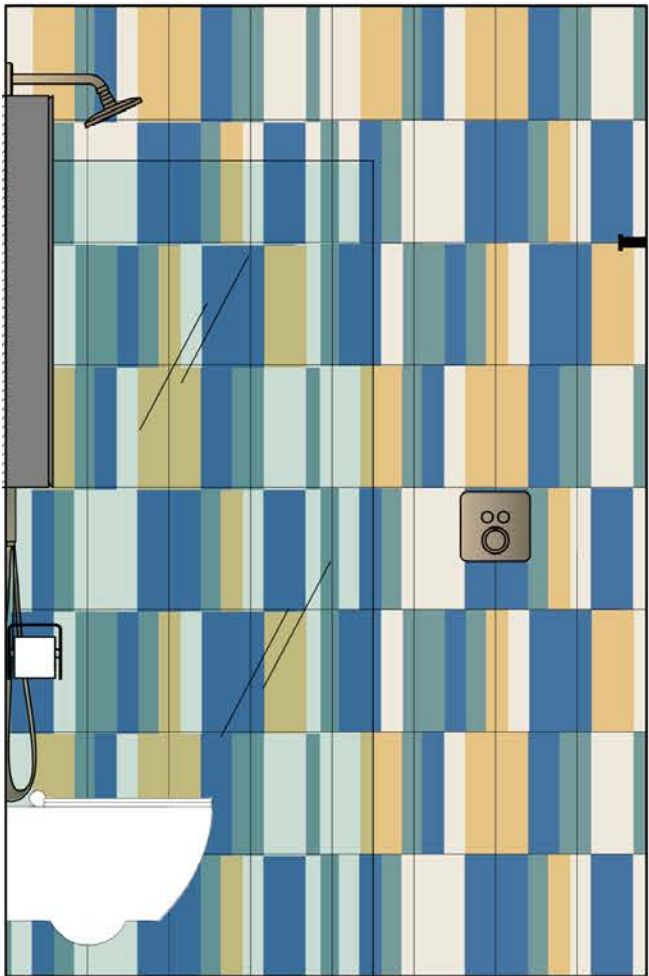


Wall tiles - Popham Tate
Refer to tile plan & popham installation guide
Need to be sealed before & after grouting
14 Patterns
14 Tiles to a box
Minimal grout 3mm
Suggested grout colour = Mapei Moon White 103

Floor tiles - Gubi Cloud
600x600mm
Minimal grout 2mm
Suggested grout colour = Mapei Medium Grey 112



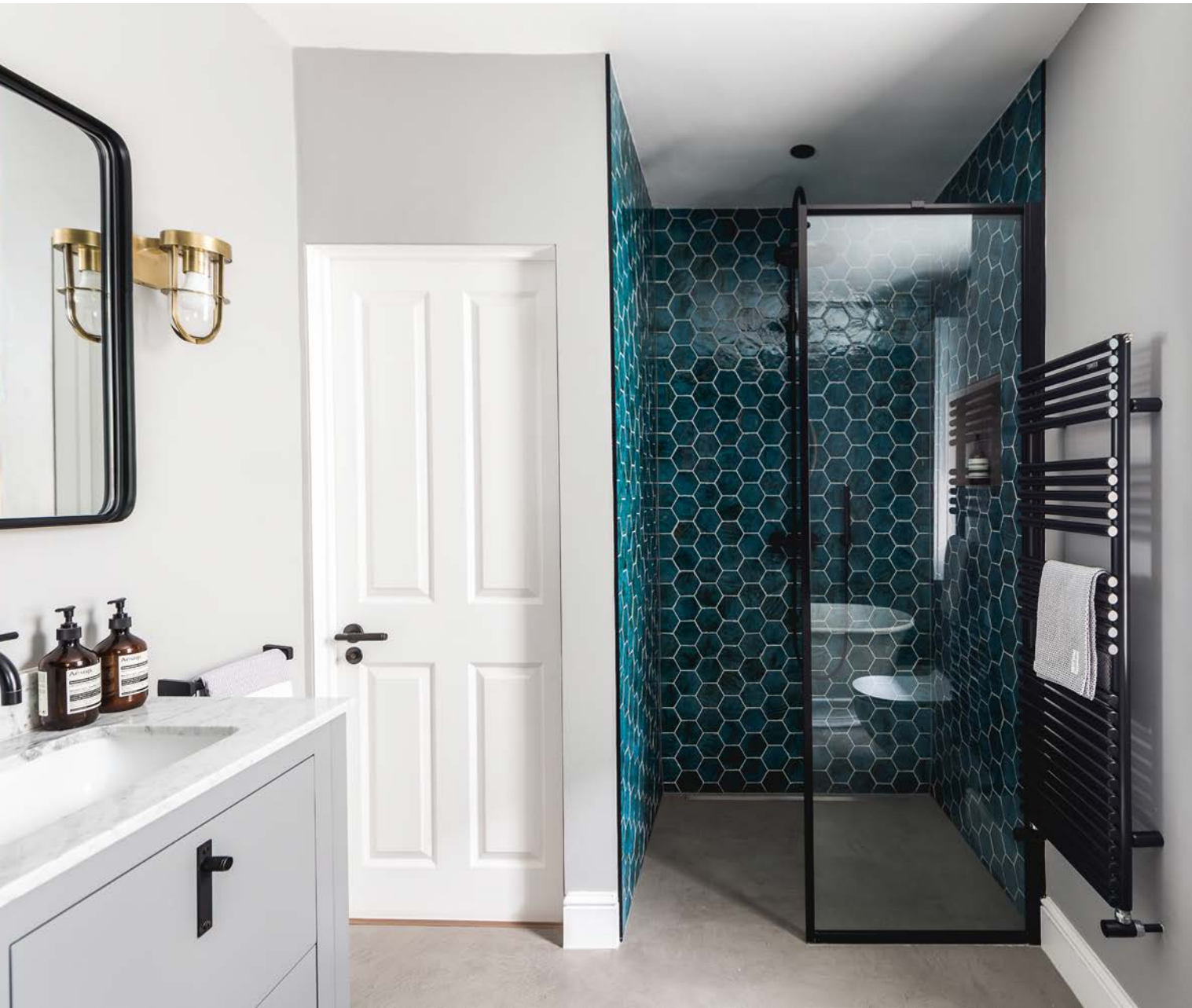
NOTE:
If we need to build a stud wall to allow for the toilet. We will need to order a smaller wetroom tray. Please let us know ASAP.





FAMILY BATHROOM

CLIENT: PRIVATE (FULL HOUSE)



NURSERY PROJECT

CLIENT: PRIVATE



ODDITIES HALLWAY

CLIENT: PRIVATE (HALLWAY/GROUND FLOOR)



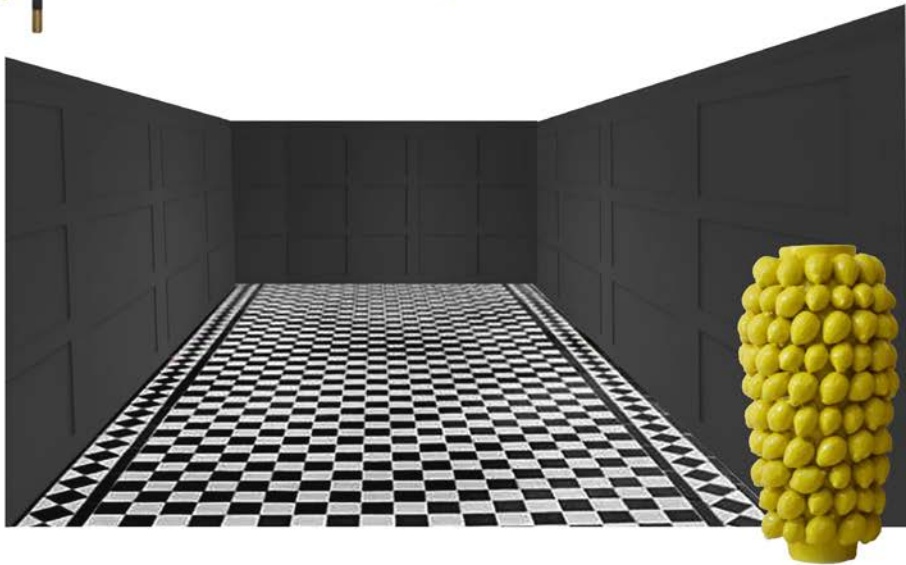
RAILINGS
No.31



STRONG WHITE
No.2001

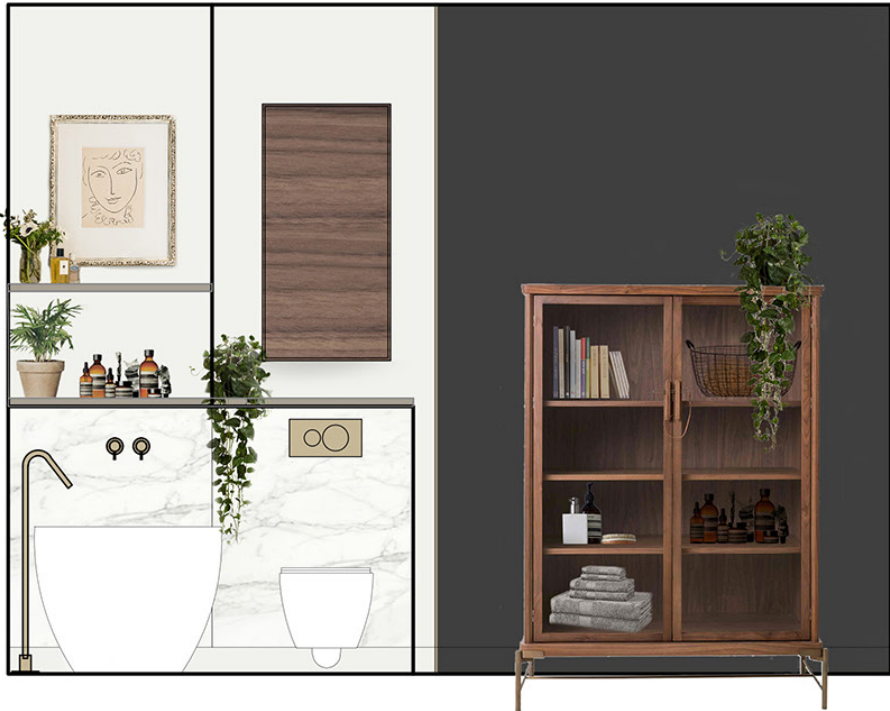
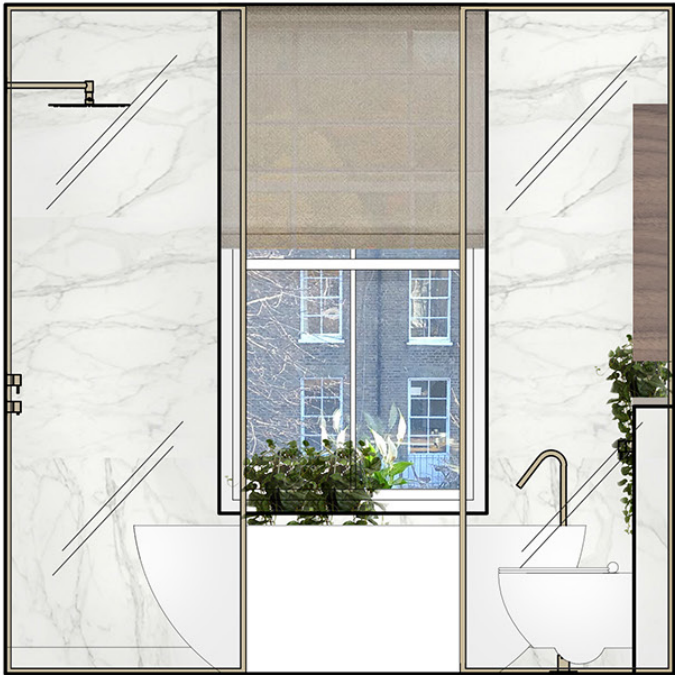


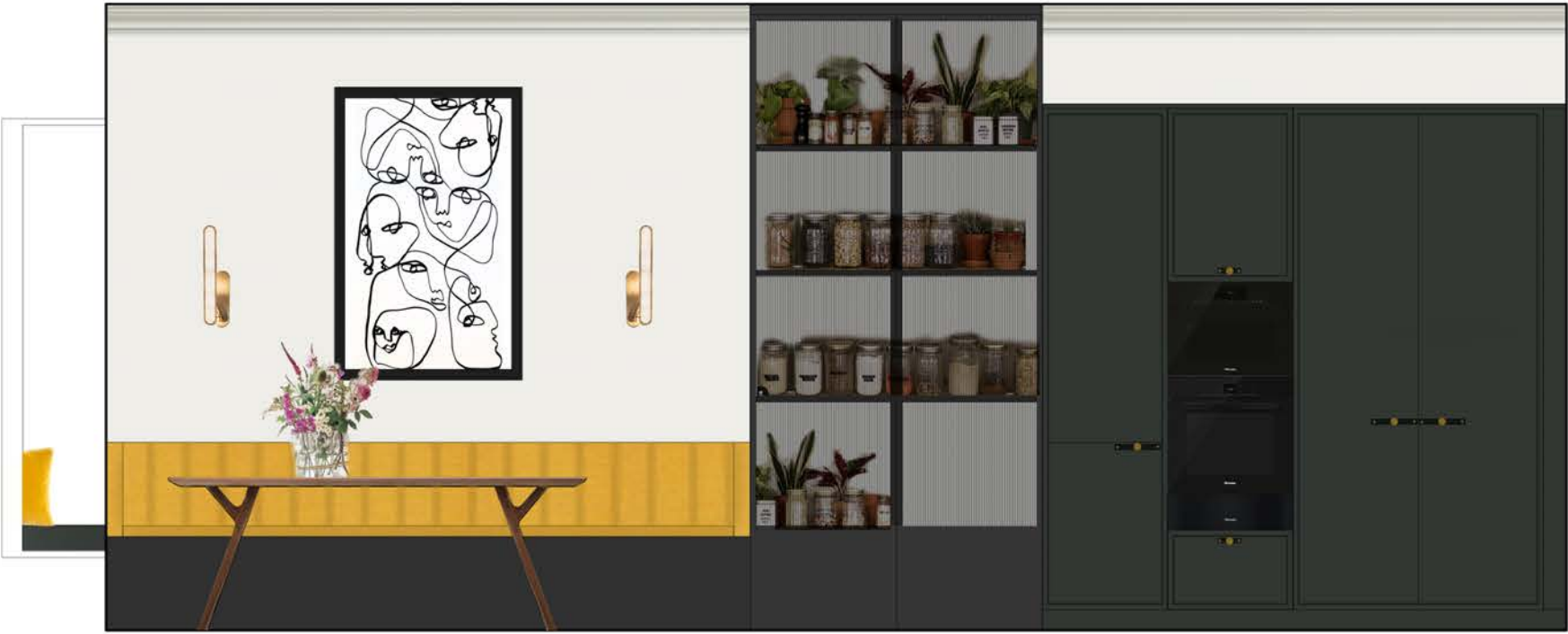
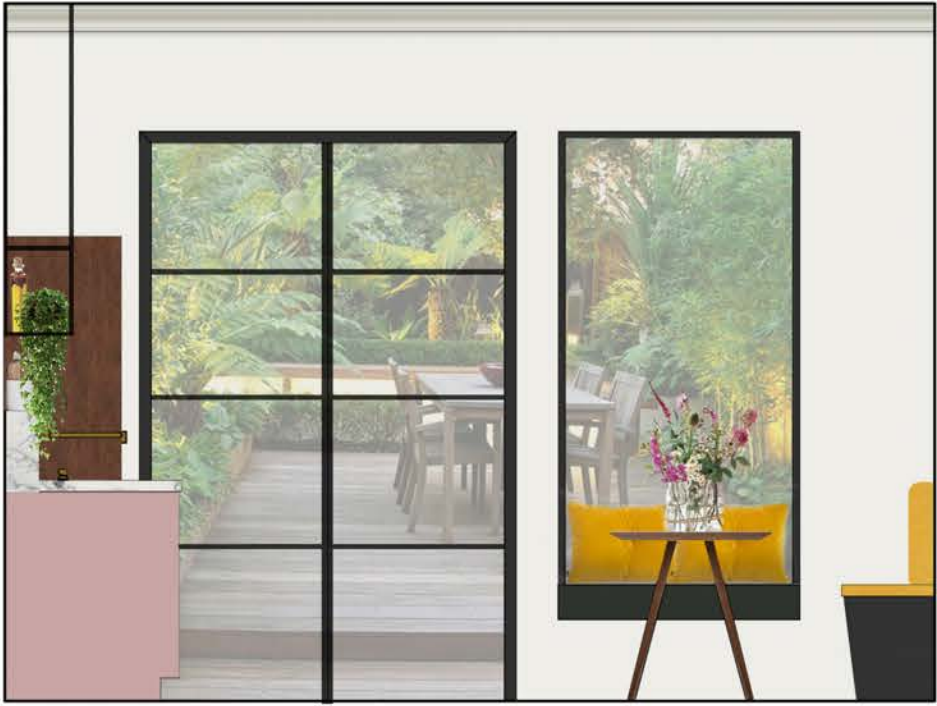
YELLOWCAKE
No.279



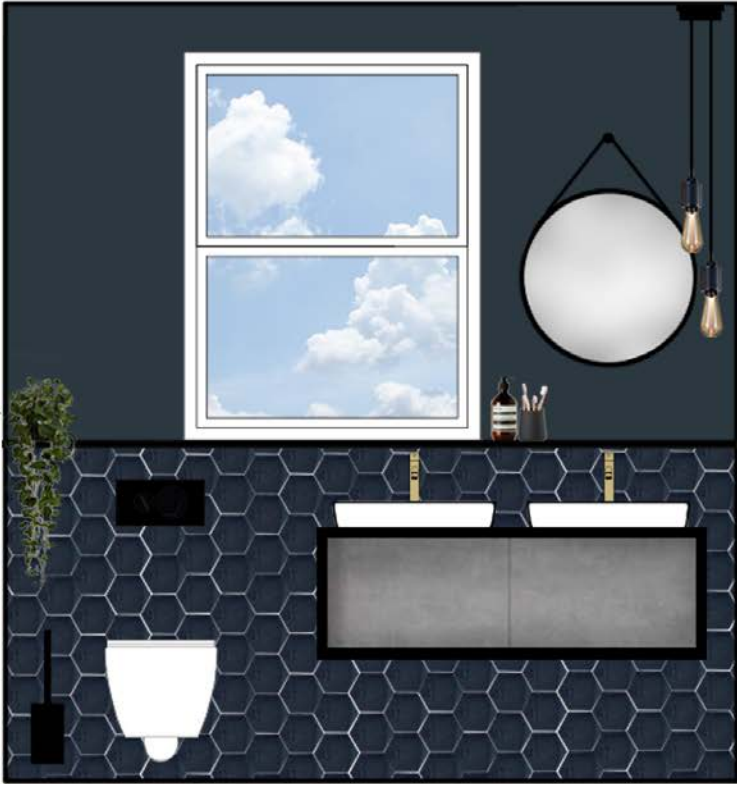
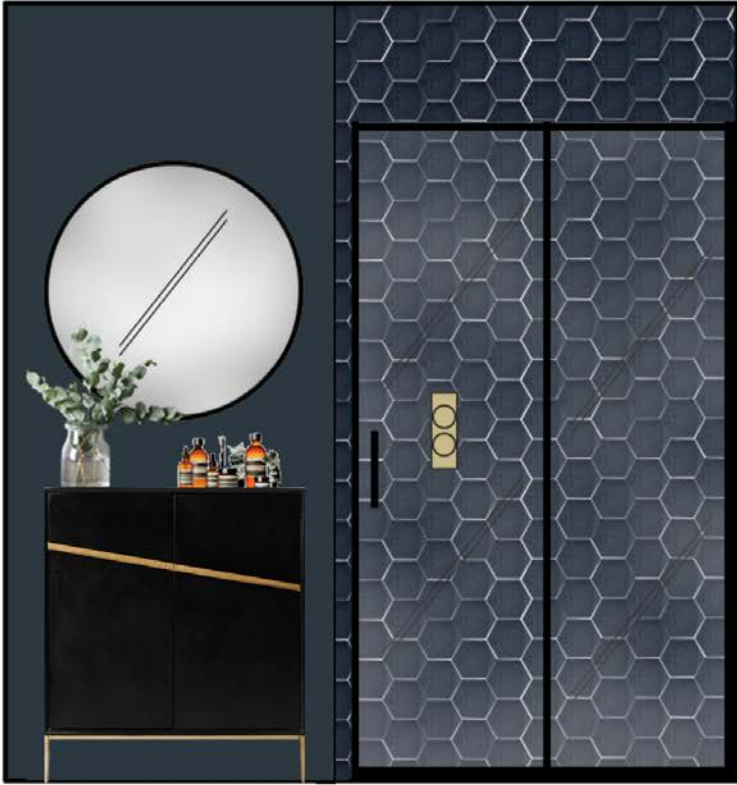
CURRENT PROJECTS

CLIENT: MIXED



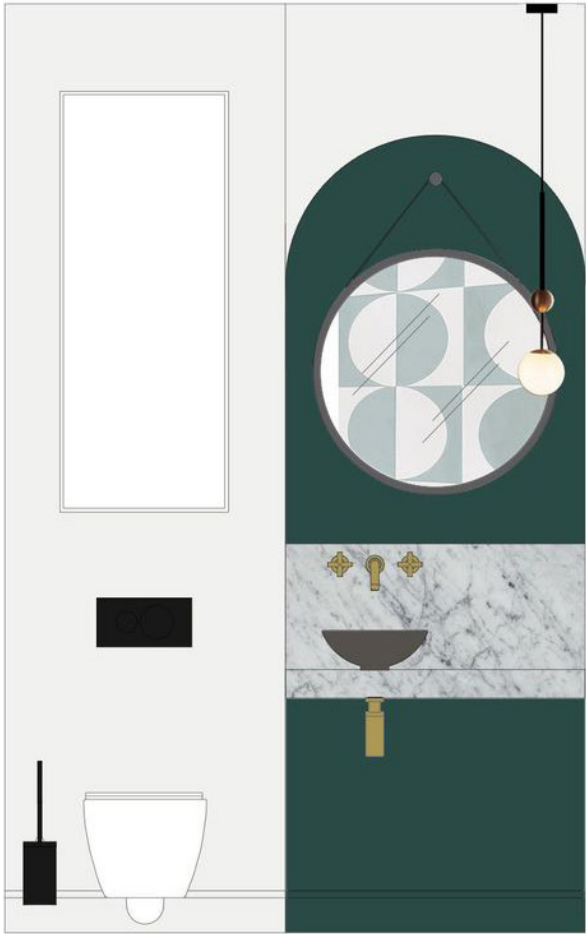


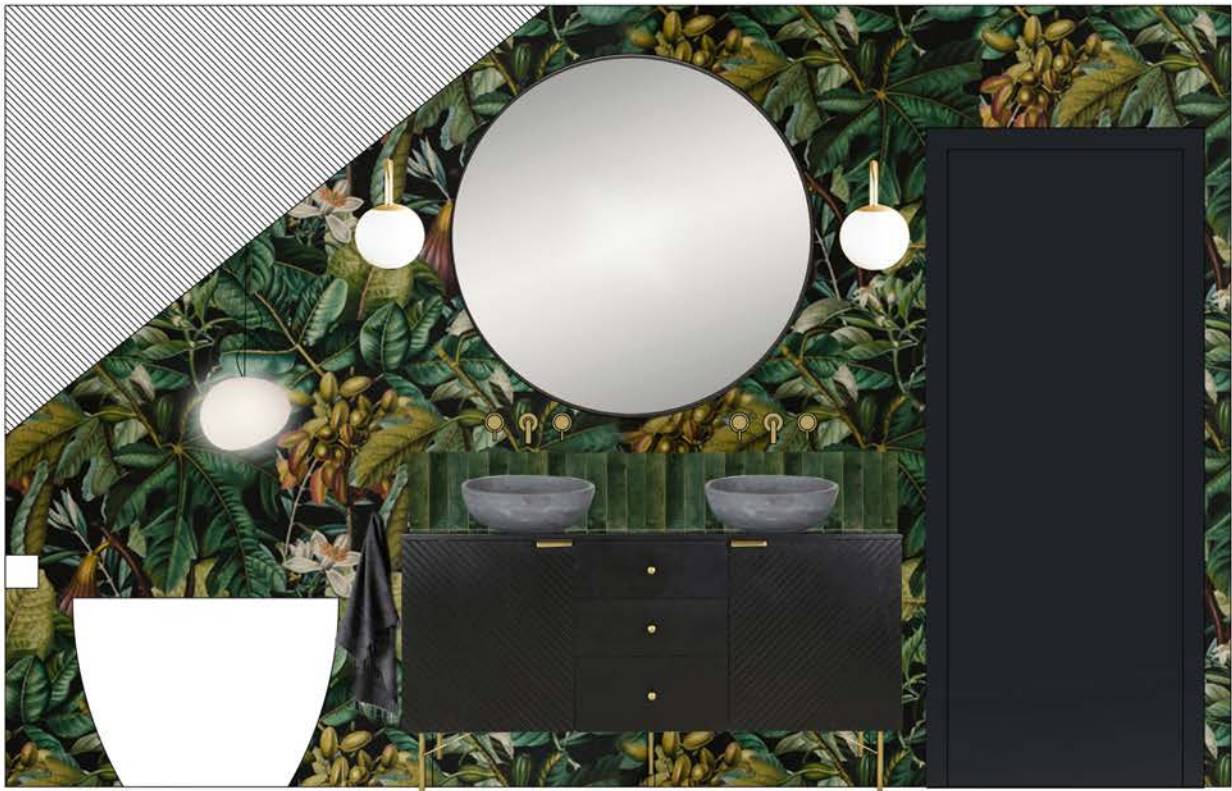
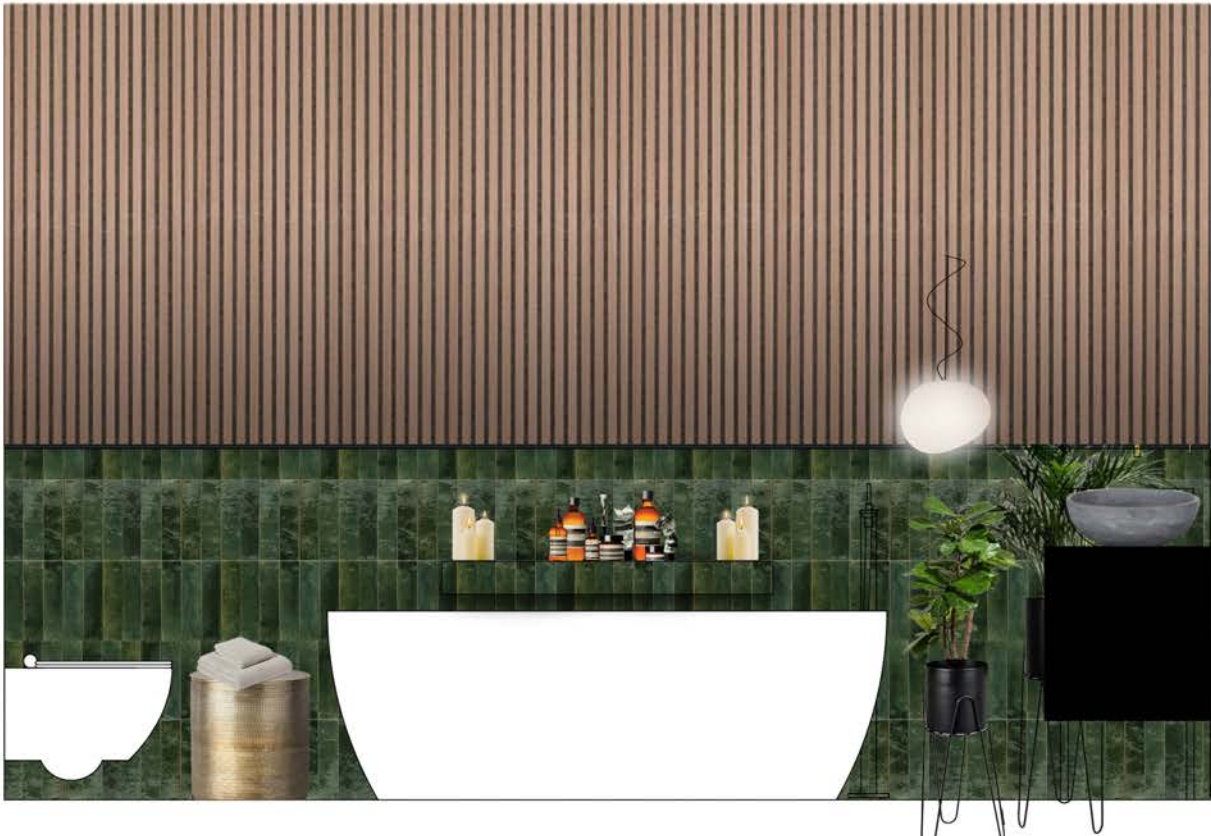
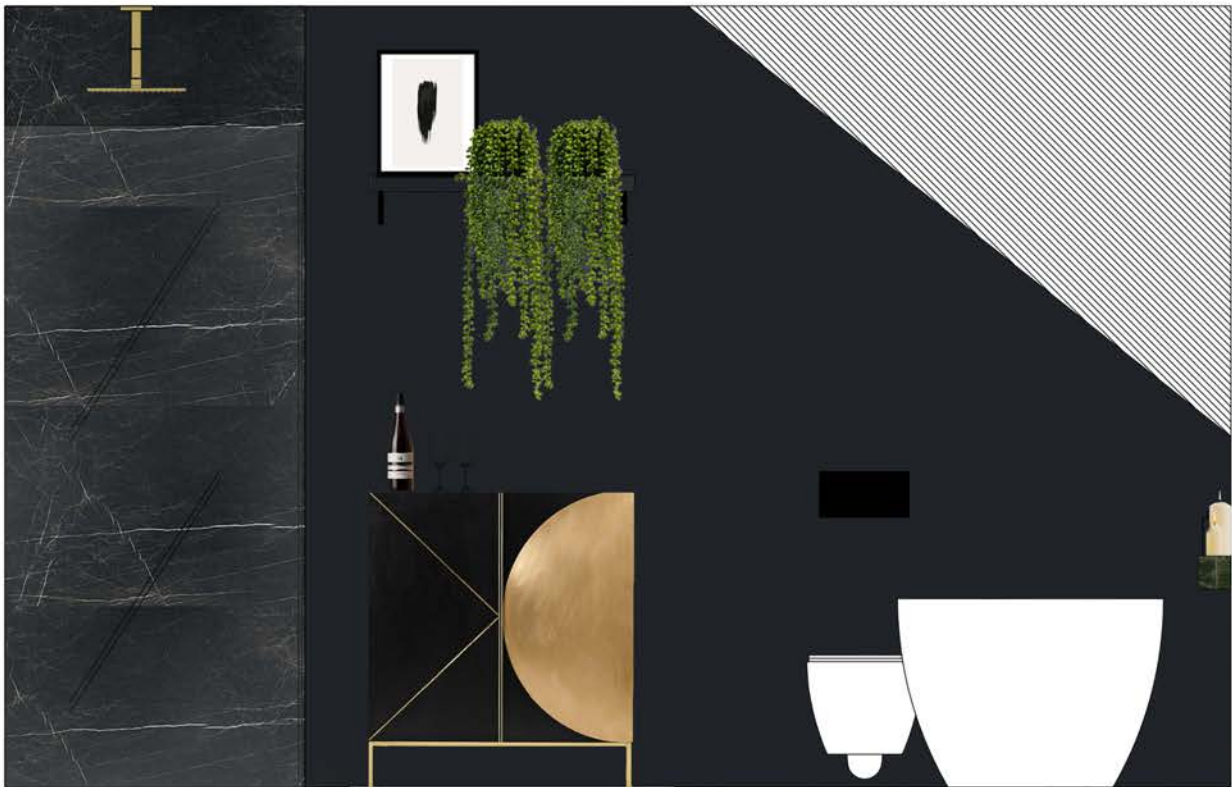
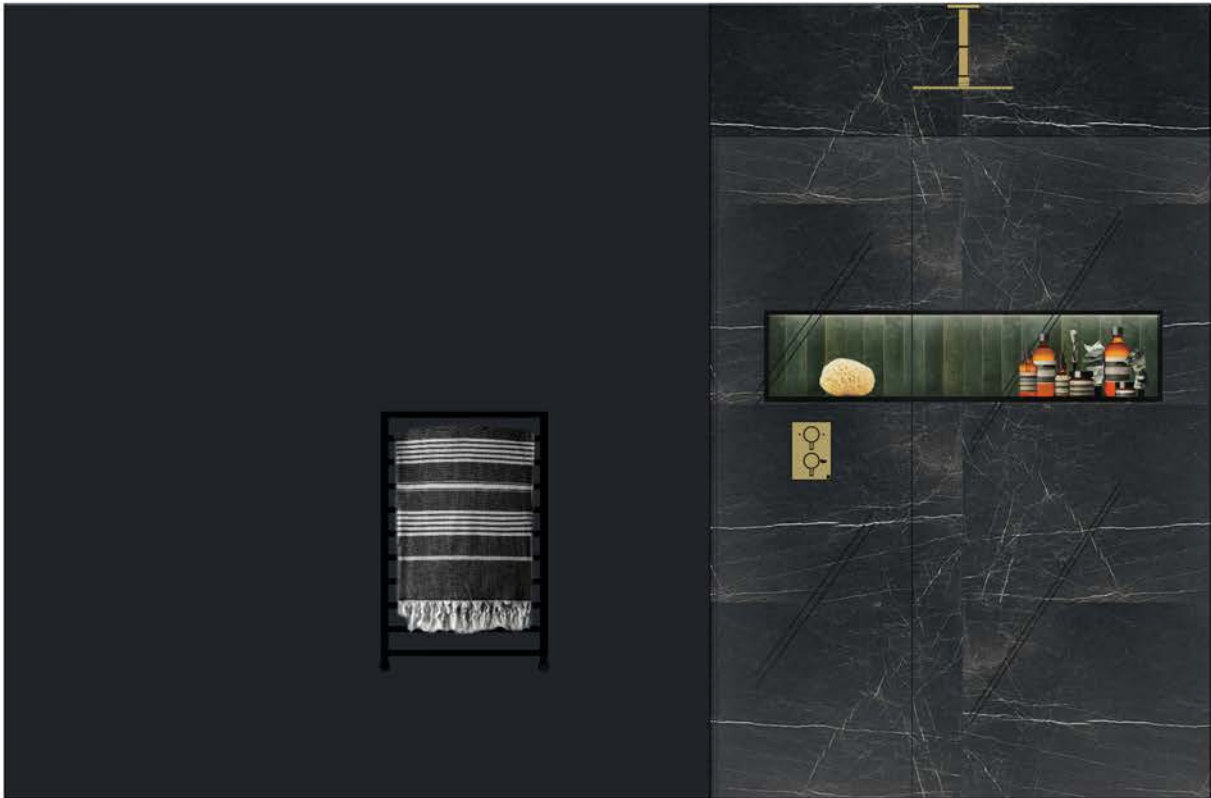












MAGAZINES

AS SEEN IN: KBB, EKBB, GRAND DESIGNS



DESIGN *know how*

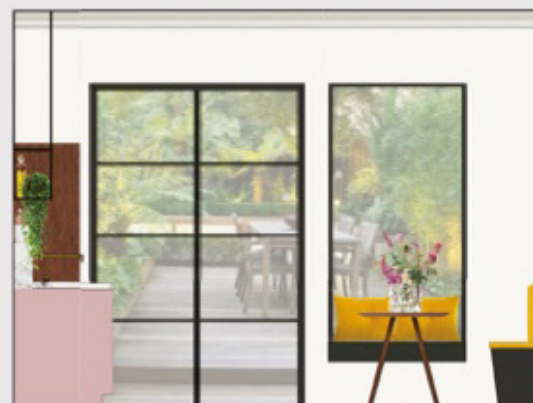
GEORGINA SAYS...

Create a sense of fun by adding colour to your cabinetry

Option 2:
MODERN SOLUTION

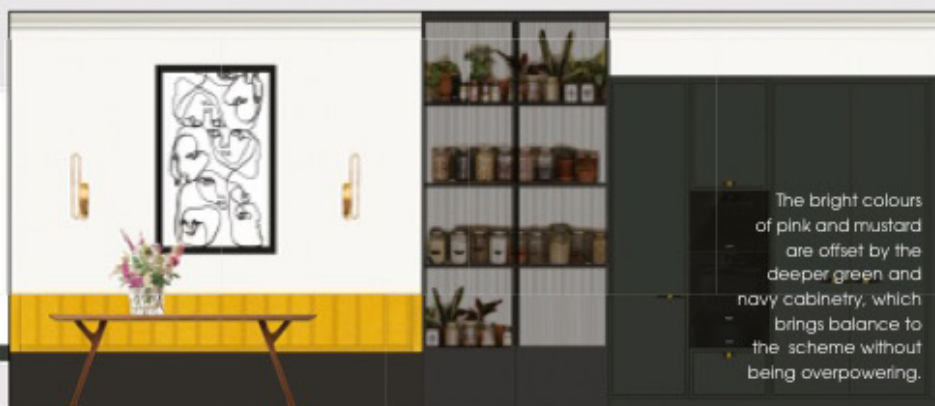
Brooke Collins, interior designer

"The pink run of cabinetry includes a sink and hob, with an extra-deep work surface. It allows for a wall-mounted tap, feature splashback, and marble shelf ideal for oils and chopping boards. The hob area is defined by a dropped apron-style front in the marble worktop, where the controls for the Bora hob are mounted – beautiful and easy to use. Opposite, I used the ceiling height to maximise on storage, with a steel-glazed pantry that combines practicality with a decorative look. I have suggested a steam combination oven and a single oven, plus a vacuum drawer for a more professional cooking approach. The built-in bench seating in a Mustard velvet fabric has storage built underneath, too – ideal for toys and less frequently used kitchen items. The storage also ties the bench in with the adjacent steel-glazed pantry, giving a holistic feel to the space." Day True kitchens start from £25,000. >



above The scheme uses the full width of the room to create a comfortable and spacious design. This allows for plenty of floor area to move around, while steel-framed glazing and a picture window with built-in seat flood the double-galley kitchen with natural light.

below The Bora hob's integrated extraction keeps the area above the appliance clean and free of obstructions, allowing for decorative lighting. The vintage dresser adds a fun and unique feel to the space, so the family can add their character to the scheme.



The bright colours of pink and mustard are offset by the deeper green and navy cabinetry, which brings balance to the scheme without being overpowering.

real project

The small kitchen

The owners of this property felt frustrated with how poorly their open-plan kitchen and living area had been planned out – so much so it made them hesitate when inviting guests over. In their brief to Day True, they asked for a space where they could host and encourage friends round for dinner parties. To achieve this, the designers looked at creating a hyper-efficient layout making the most of the small floor area available. It had to be suitable for their kitchen needs while also providing the social space they desired. One of the main challenges in achieving this was the size of the room, especially because it was really important for the homeowners to have a breakfast bar that offered a place to sit and get some work done while the other person cooks. They also wanted the space to be connected, but it needed a boundary to separate the chef from the rest of the house. A small island was the solution: it includes a Bora hob but has enough free work surface to be an efficient preparation space, plus two bar stools underneath as a casual perch. The overall look was kept minimal and handleless to aid the sleek design, so the final result wouldn't feel cluttered.

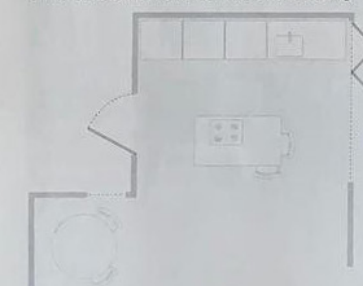
left Despite its limited size, a small island was included in this kitchen to help create a border in the open-plan space and somewhere informal to sit while another cooks. Kitchens from Day True start from £25,000.

below left Enough space has been left around the sink, so the owners are able to easily wash up without feeling squashed.



The PLANS

To make the open-plan kitchen-living-dining area feel more social, a hob was placed on the island facing out towards the majority of the space. A small area was left for seating.





All in the DETAIL

Luxurious finishes and fittings combine to create a unique and timeless style in the bathroom of this South London home

PHOTOS: Gary Summers | WORDS: Emily Peck



Essential bathrooms

BATHROOM PROFILE

Interior design specialists Day True used a range of eye-catching elements here, such as black Dornbracht brassware, the Brampton bath from BC Designs and a bespoke vanity unit in Day True colour DT5.

SNEAK PREVIEW

The two mirrors maximise the sense of space and give a glimpse of the beautiful feature tiles in the shower before you walk into the room.



With an aim to create a stylish and practical family bathroom, the owners of this five-bedroom Victorian home in South London approached interior design company Day True. "The couple have three teenage children and wanted us to design a space that not only looked good, but was ergonomic and durable enough for the whole family to use," explains Brooke Collins of Day True. "They also wanted it to be a place where they could escape to after a long day and have a well-deserved bath with a glass of wine."

The bathroom is now full of character and features an elegant palette of vibrant blue (as seen in the handmade tiles), earthy greys (as used in the vanity unit and wallcoverings) and modern, white sanitaryware. Black Dornbracht brassware contrasts beautifully to complete the look and enhance the character.

Planning the new bathroom didn't come without challenges, however. The original space looked tired and outdated, and there was a strange angle to the door that made the entrance awkward. "We started by reconfiguring the angled bathroom entrance to make it feel more spacious," explains Brooke. "But we could only find out how much space we would gain by straightening up the door once the builders started ripping out the existing bathroom."

Due to planning constraints, it seemed like an obvious choice to keep the shower in the same location, but by squaring off the angle of the door, space was freed up to redesign the layout of the rest of the room, much to Brooke's delight. "We were able to move the basin to the wall in front of the door, so we could include a beautiful BC Designs freestanding bath, which is now the main focal point as you enter the room. We also blocked up a small window in the shower area, but used the void to create a recess for storage. The existing shower area had a large step into the tray and enclosed doors with bulky frames, but by using a wet room tray, we levelled the floor to the shower. This allowed us to have a minimal fixed screen and gave us more space to create a luxurious shower experience." *© Brooke Collins*

IN CONTRAST

Above The dark grey textured waterproof wallpaper was chosen for the wall behind the bath to help make a statement of the smooth and modern BC Designs bath.

FIRM FIXTURE

Right The bespoke W9 Collection wall-hung storage unit has a walnut interior and matches the vanity unit.



Essential bathrooms

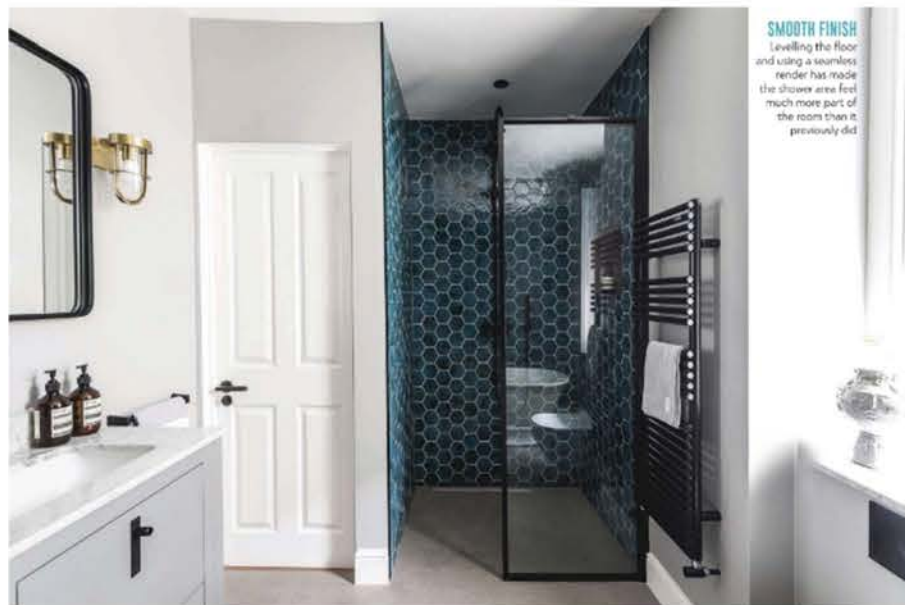


VANITY FAIR
The W9 Collection vanity unit is finished in a sophisticated grey and features a Carrara marble worktop.



IN DETAIL
Matte black Dorbracht taps add character to the bathroom and are used throughout the bath and shower space too.

'Using a base of black and white meant we could have some fun with the rest of the finishes and materials in the bathroom'



SMOOTH FINISH
Leveling the floor and using a seamless render has made the shower area feel much more part of the room than it previously did.

108 FEBRUARY 2020 107



SPA FEEL
The BC Designs bath takes pride of place opposite the shower area and provides the ideal place in which to unwind after a busy day.

ELECTRIC BLUE
The Dorvus blue hexagonal handmade tiles add a refreshing pop of colour into the predominantly monochrome scheme.



LIGHT SHOW
The Astro cabin wall light in antique brass adds an extra touch of classic style to this timeless design.



Q&A
BROOKE COLLINS,
INTERIOR DESIGNER AT DAY TRUE

How would you describe the style here? The house was a period property, so it was important that the design was sympathetic to the era. We opted for classic black detailing in the brassware, the handles on furniture, shower frame, accessories and the heated towel rail as they create a timeless feel. The bespoke walnut interior vanity with Carrara marble top gives a softness, which contrasts with the darker wallpaper at the back of the bath.

Can you tell us about the finishes and colours you used here? An elegant palette of vibrant blue tiles and sober

greys sets the tone. We implemented hand finishes in a subtle way to give it the character and softness it needed to create a moody and inclusive space. In the shower area we opted for handmade terracotta tiles with an oxidised finish to make a subtle change in colour and warmth from the grey used elsewhere. The vanity unit and wall cabinet have a hand-dragged appearance rather than just being a sprayed flat finish. The open shelves of the vanity unit allowed us to show off the beautiful walnut interior. Meanwhile, for the top of the vanity unit and top of the toilet cistern we used a tactile Carrara marble.

PROJECT DETAILS

DESIGN Day True. A similar bathroom would cost £28,000.

FIXTURES AND FITTINGS
BC Designs Bampton bath, £2,900, with Bath tap; shower fittings, all from Dorbracht, Tara Collection. Bespoke W9 Collection vanity unit and storage, from £3,688, under-mounted basin, £226, 3/4in wall-hung WC and soft close seat, £996, marble vanity top, £1,500, all Catalans. Drench-flood shower screen, £1,680. Micro-cement flooring, EPOA, Moxtek. Astro cabin wall light in antique brass, £204. Tubes Bath25 heated towel rail in matt black, £485. HEXA wall tiles, £275 per sq m. Dorvus, all supplied by Day True. For stockists and contact details, see page 156.



TAILORED DESIGN
Black Dorbracht brassware and a Drench-flood shower screen add opulence and provide contrast to the blue tiles.

108 FEBRUARY 2020 109

